

CFX Automation System

The CFX automation system works with the CFX96™ and CFX384™ real-time PCR detection systems to enable walk-away, high-throughput operation in a simplified format that does not compromise precision. The plug-and-go benchtop plate handler has the capacity to load up to 20 PCR plates at a time. This system facilitates the automation of workflows, generation of large volumes of data, and rapid data analysis. The system is ideally suited to meet the high-throughput requirements of today's drug discovery workflows, letting you process up to 7,680 samples in a single run of 20 384-well plates on the CFX384 system.

The CFX automation system makes it easy to:

- Maximize laboratory throughput by integrating 1 CFX96 or CFX384 real-time PCR detection system with hands-free running of up to 20 plates
- Improve experimental workflow and automation tasks to ensure maximum productivity
- Track samples using the integrated bar code reader
- Navigate, set up, and execute multiple PCR experiments using intuitive CFX automation controller software
- Define PCR protocols for an entire plate stack at once
- Receive email notification with an attached data file or report upon completion of a single run

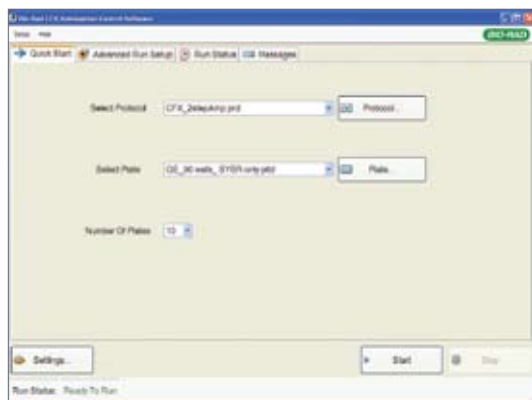


Simple Operation and Intuitive Software

CFX automation control software manages the configuration and operation of the CFX automation system with the CFX96 or CFX384 real-time PCR detection system, ensuring maximum productivity. The software includes Quick Start and Advanced Run Setup options to program your runs.

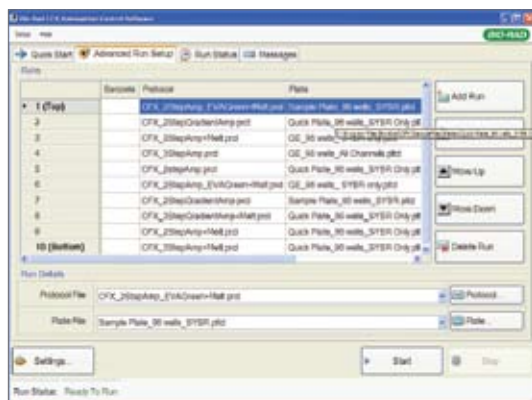
To get started using the Quick Start option:

1. Select a protocol from the pre-existing list.
2. Select a suitable plate setup.
3. Select the number of plates.
4. Click **Start** to initiate the automation run.



Quick Start window.

Use the Advanced Run Setup option to manage different protocols and plate setups within a batch run.



Advanced Run Setup window.

Ordering Information

Catalog #	Description
184-5072	CFX Automation System , includes robotic plate handler, base tray, bar code scanner, CFX automation control software CD, instruction manual
185-5096	CFX96 Real-Time PCR Detection System , includes C1000™ thermal cycler chassis, CFX96 optical reaction module, CFX Manager™ software, license for qbase ^{PLUS} software, communication cable, power cord, reagent and consumable samples, instructions
185-5384	CFX384 Real-Time PCR Detection System , includes C1000 thermal cycler chassis, CFX384 optical reaction module, CFX Manager software, license for qbase ^{PLUS} software, communication cable, power cord, reagent and consumable samples, instructions
HSP-3905	Hard-Shell® Thin-Wall 384-Well Skirted PCR Plates With Bar Codes , clear shell, white wells, 50
HSP-9901	Hard-Shell Thin-Wall 96-Well Skirted PCR Plates With Bar Codes , white shell, clear wells, 50

Notice regarding Bio-Rad thermal cyclers and real-time systems: Purchase of this instrument conveys a limited non-transferable immunity from suit for the purchaser's own internal research and development and for use in human in vitro diagnostics and all other applied fields under one or more of U.S. Patents 5,656,493, 5,333,675, 5,475,610 (claims 1, 44, 158, 160–163 and 167 only), and 6,703,236 (claims 1–7 only), or corresponding claims in their non-U.S. counterparts, owned by Applied Biosystems. No right is conveyed expressly, by implication or by estoppel under any other patent claim, such as claims to apparatus, reagents, kits, or methods such as 5' nuclease methods. Further information on purchasing licenses may be obtained by contacting the Director of Licensing, Applied Biosystems, 850 Lincoln Centre Drive, Foster City, California 94404, USA.

Bio-Rad's real-time thermal cyclers are licensed real-time thermal cyclers under Applied Biosystems' United States Patent 6,814,934 B1 for use in research, human in vitro diagnostics, and all other fields except veterinary diagnostics.

Bio-Rad's real-time thermal cyclers are covered by one or more of the following U.S. patents or their foreign counterparts owned by Eppendorf AG: U.S. Patent Nos. 6,767,512 and 7,074,367.

Hard-Shell plates are covered by one or more of the following U.S. patents or their foreign counterparts owned by Eppendorf AG: U.S. Patent Nos. 7,347,977, 6,340,589, and 6,528,302.



**Bio-Rad
Laboratories, Inc.**

Life Science
Group

Web site www.bio-rad.com USA 800 4BIORAD Australia 61 02 9914 2800 Austria 01 877 89 01 Belgium 09 385 55 11 Brazil 55 21 3237 9400 Canada 905 364 3435 China 86 21 6426 0808 Czech Republic 420 241 430 532 Denmark 44 52 10 00 Finland 09 804 22 00 France 01 47 95 69 65 Germany 089 318 84 0 Greece 30 210 777 4396 Hong Kong 852 2789 3300 Hungary 36 1 455 8800 India 91 124 4029300 Israel 03 963 6050 Italy 39 02 216091 Japan 03 6361 7000 Korea 82 2 3473 4460 Mexico 52 555 488 7670 The Netherlands 0318 540666 New Zealand 0508 805 500 Norway 23 38 41 30 Poland 48 22 331 99 99 Portugal 351 21 472 7700 Russia 7 495 721 14 04 Singapore 65 6415 3188 South Africa 27 861 246 723 Spain 34 91 590 5200 Sweden 08 555 12700 Switzerland 061 717 95 55 Taiwan 886 2 2578 7189 United Kingdom 020 8328 2000